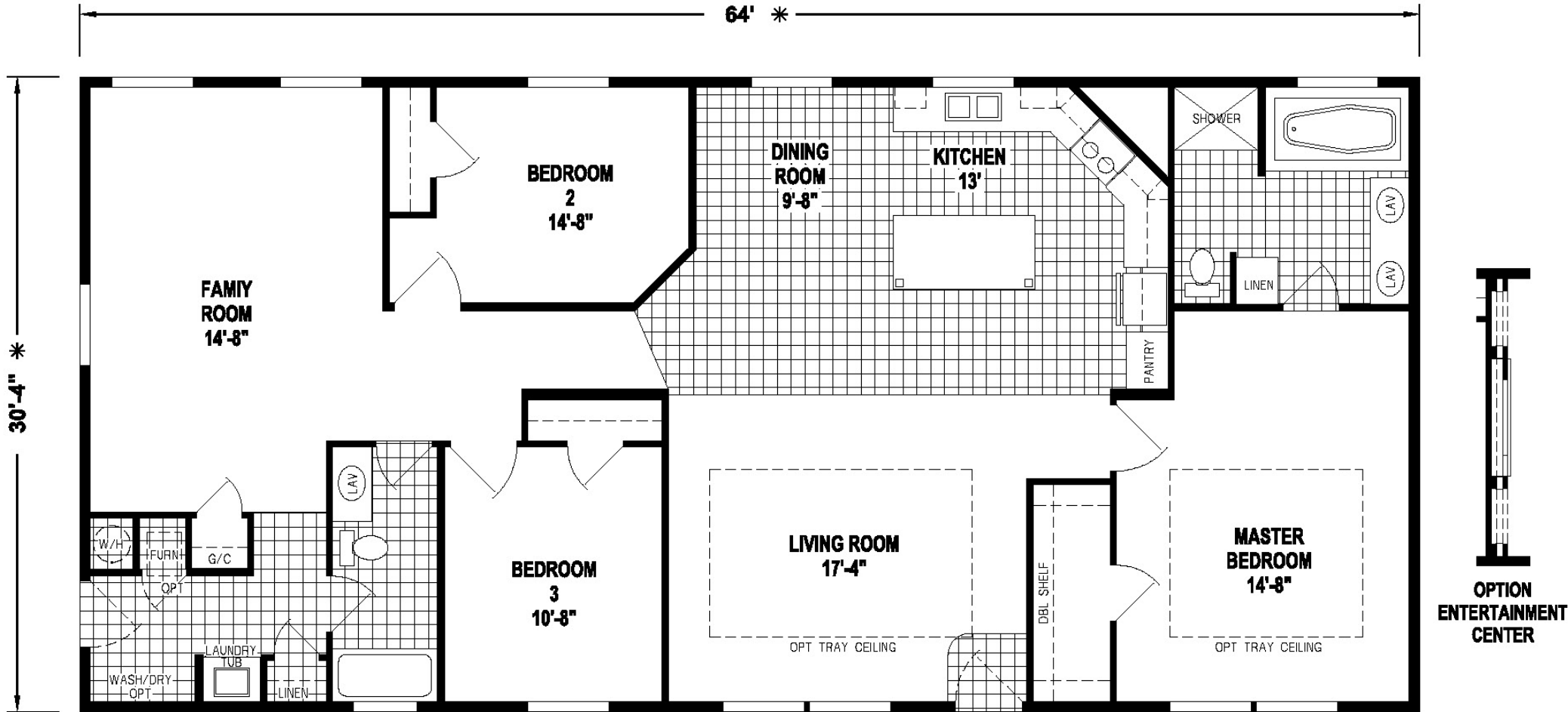


SKYLINE – WOODBRIDGE SERIES Mt. Spokane
7643 Home Sales

3 Bedroom 2 Bathroom
1,770 Square Feet



www.MTSPOKANEHOMESALESLLC.com - FOR CURRENT BASE PRICE, INFORMATION AND PICTURES!

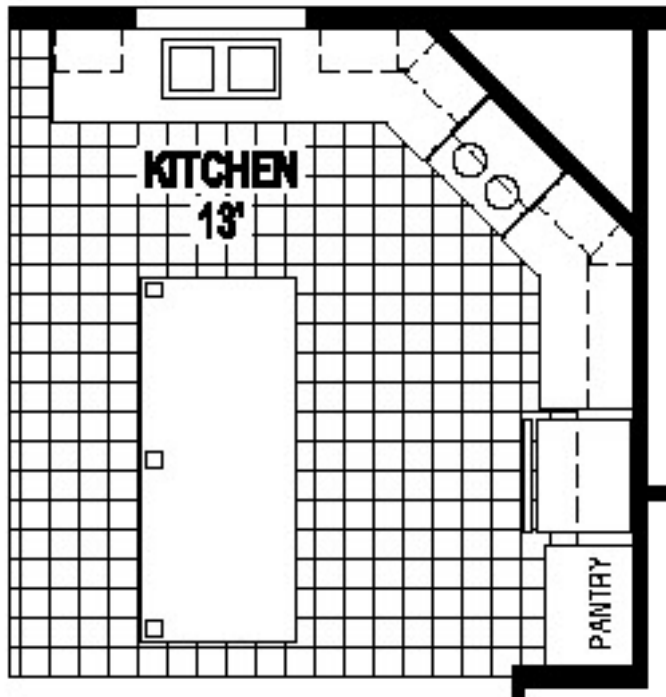
14515 N NEWPORT HWY - MEAD, WA 99021

(509) 467-4271

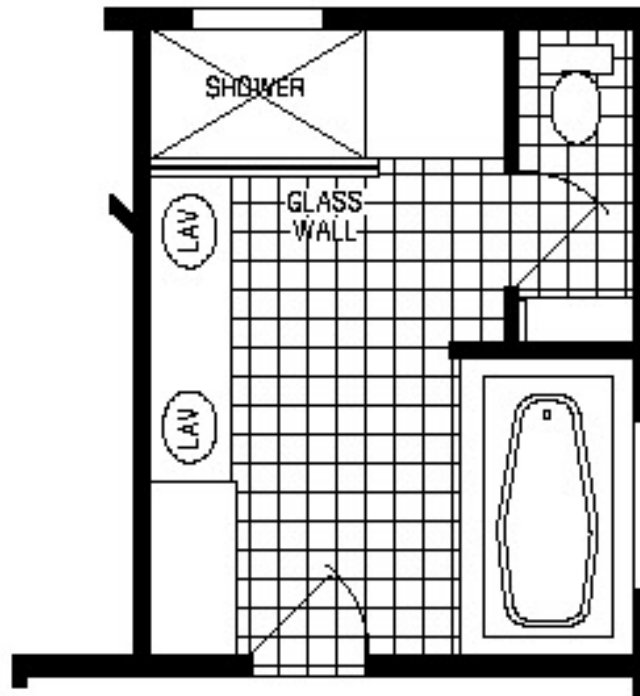
Due to ever changing information, all information in our brochures may vary from actual home. The right is reserved to make changes at any time, without notice or obligation, in colors, materials, specifications, processes, and models. All dimensions and square footage calculations are nominal and approximate figures.

SKYLINE – WOODBRIDGE SERIES Mt. Spokane
7643 - OPTIONS Home Sales

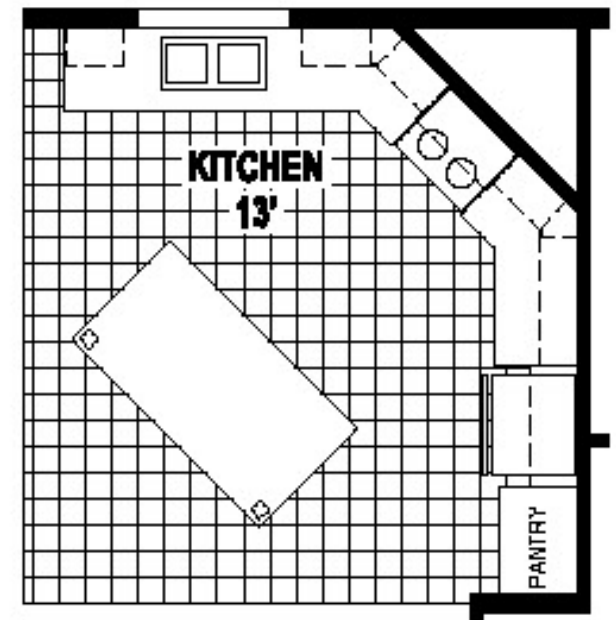
3 Bedroom 2 Bathroom
1,770 Square Feet



**OPTION
TRANSVERSE ISLAND**



**OPTION
WALK-IN SHOWER
BATH**



**OPTION
ANGLE ISLAND**

www.MTSPOKANEHOMESALESLLC.com - FOR CURRENT BASE PRICE, INFORMATION AND PICTURES!

14515 N NEWPORT HWY - MEAD, WA 99021

(509) 467-4271

Due to ever changing information, all information in our brochures may vary from actual home. The right is reserved to make changes at any time, without notice or obligation, in colors, materials, specifications, processes, and models. All dimensions and square footage calculations are nominal and approximate figures.